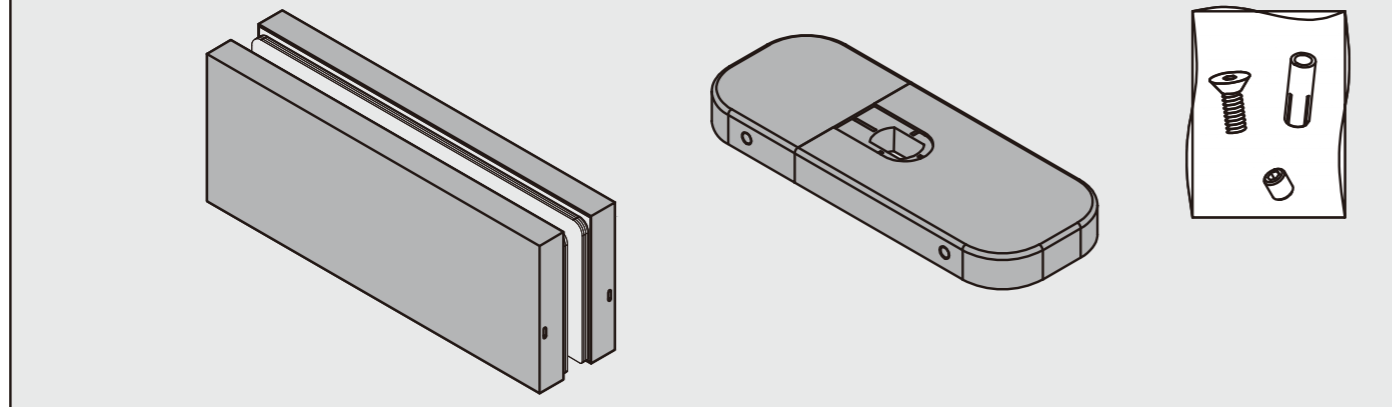
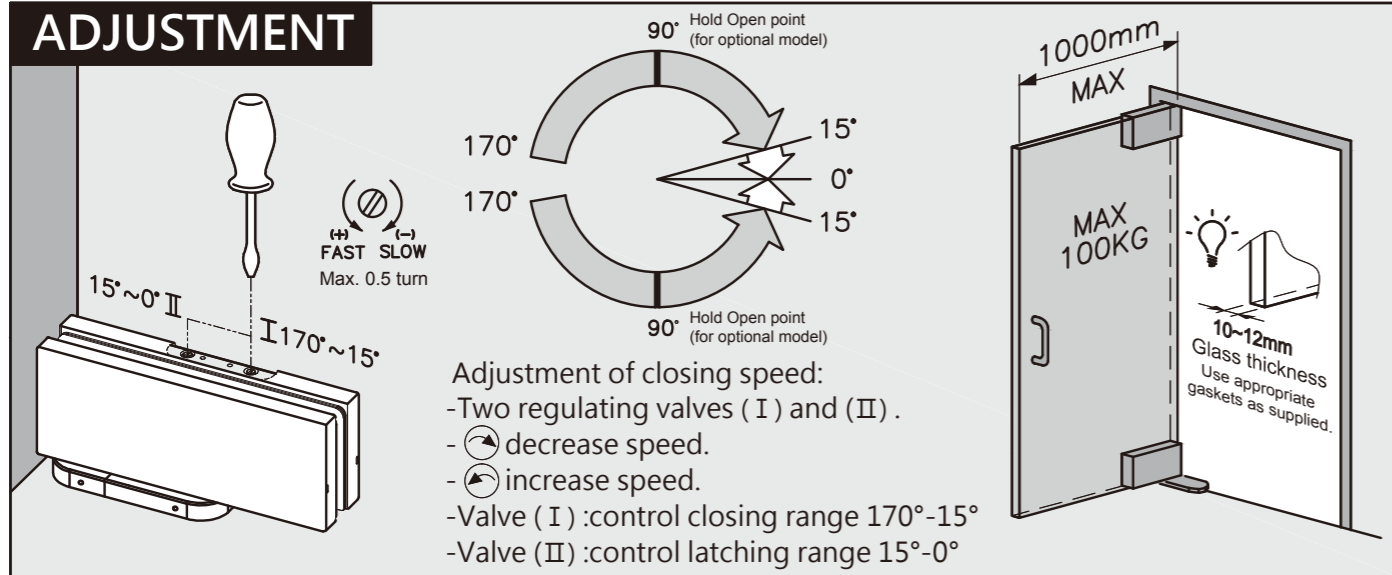


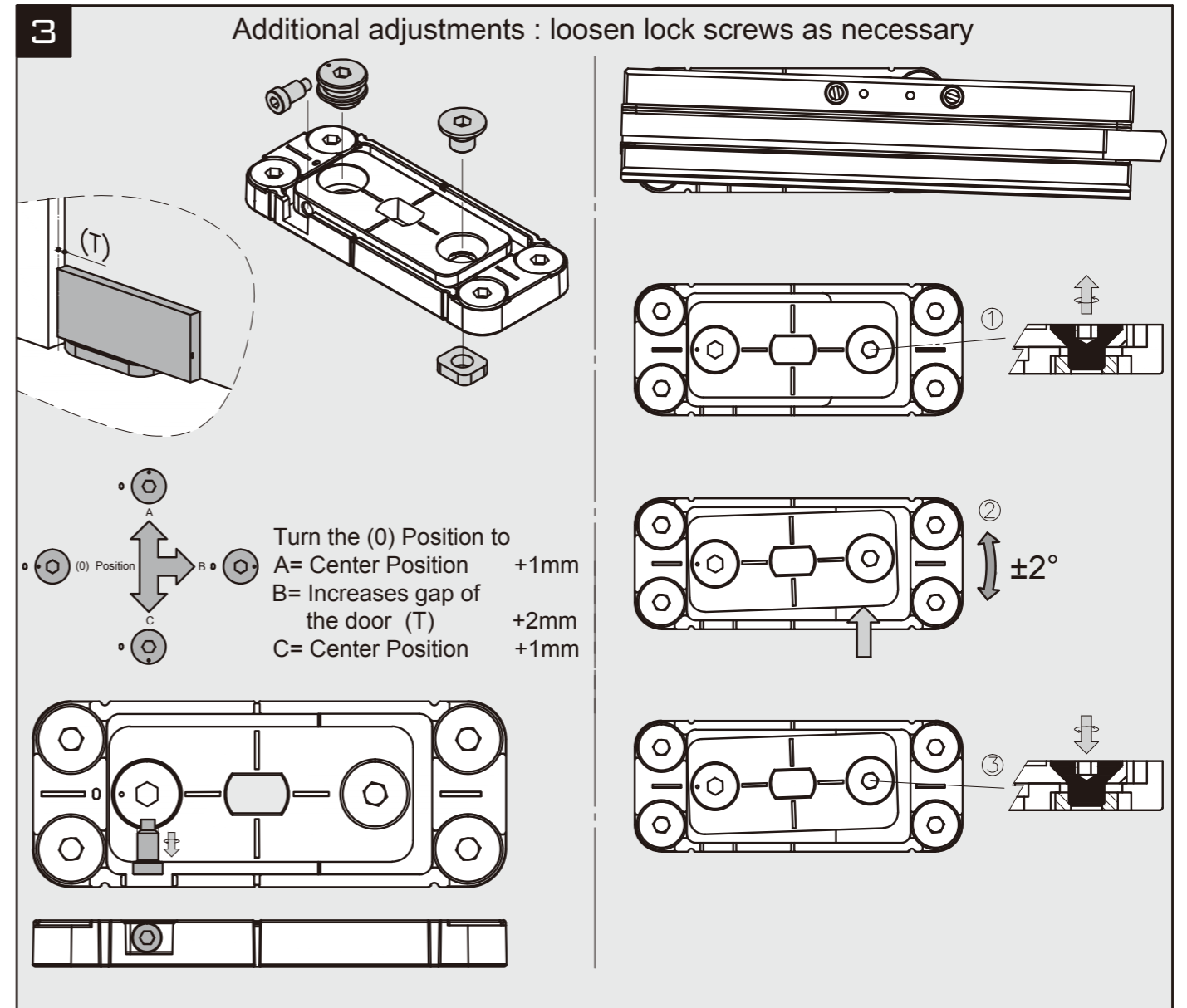
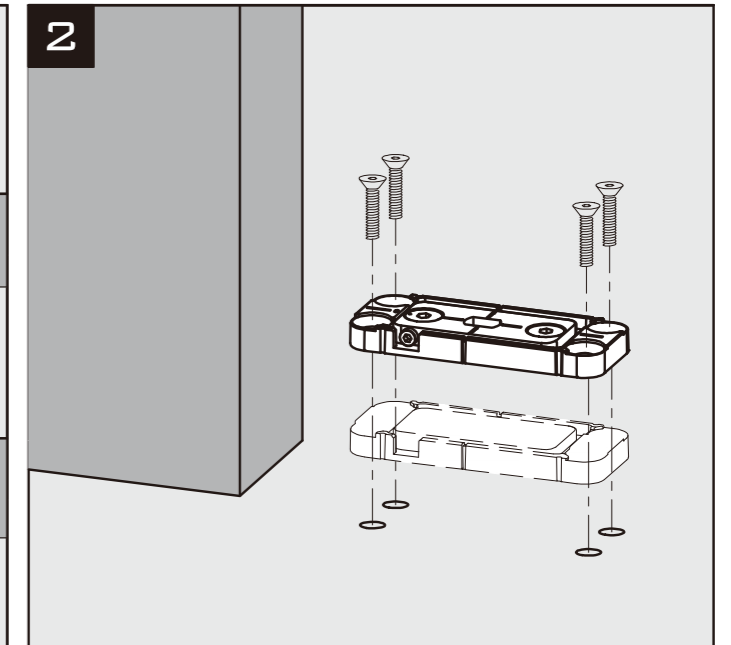
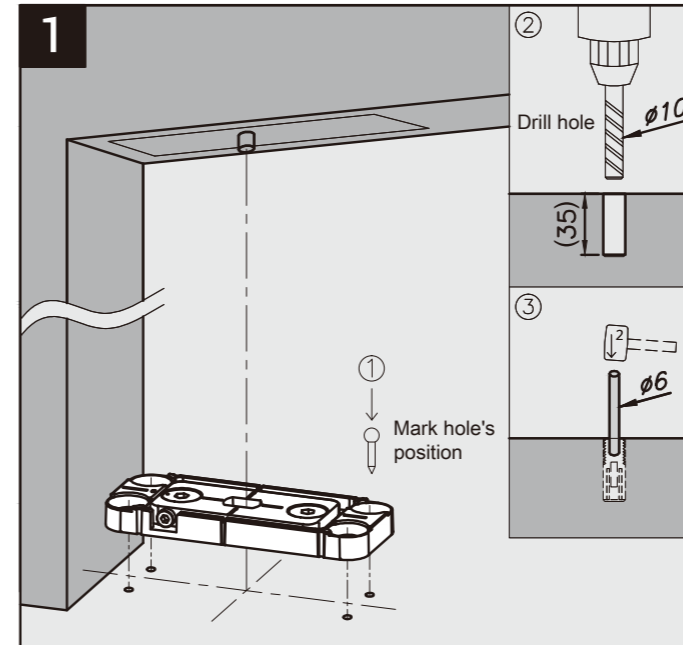
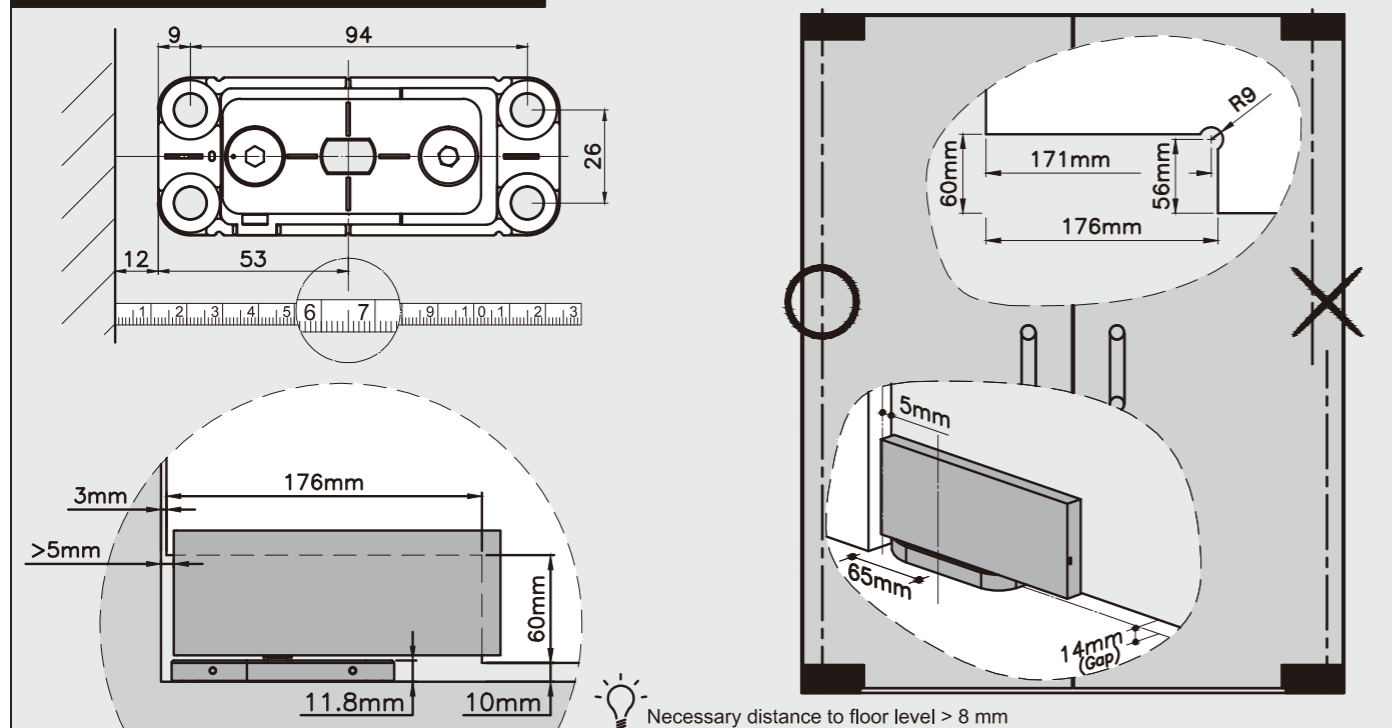
CONTENTS

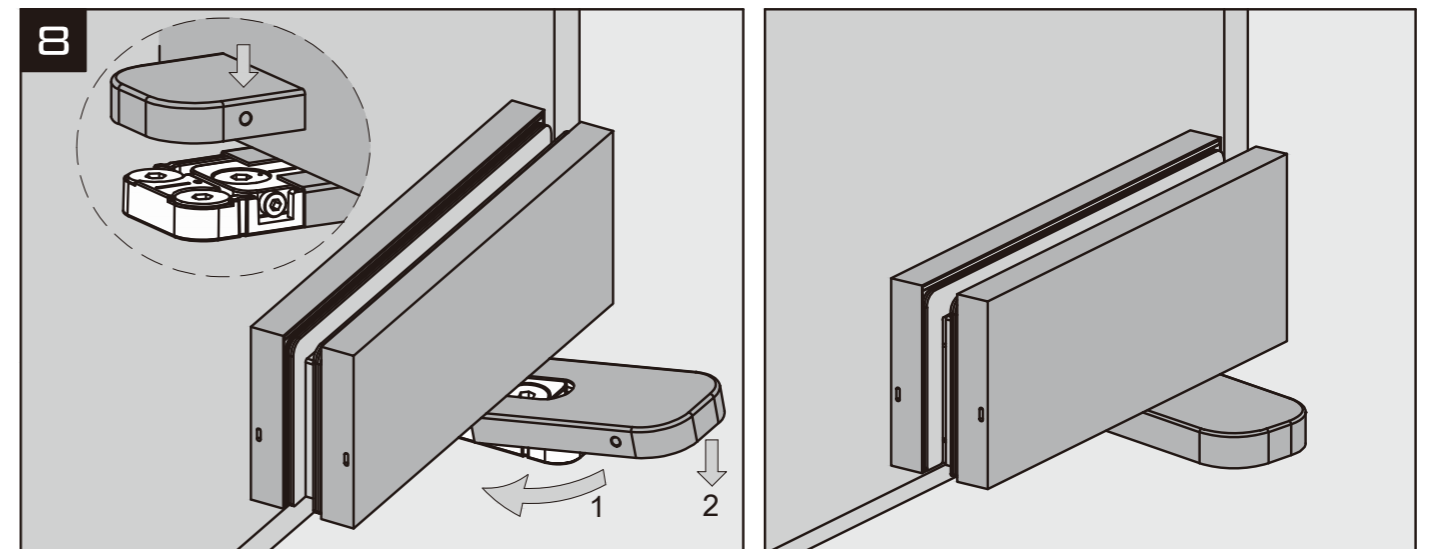
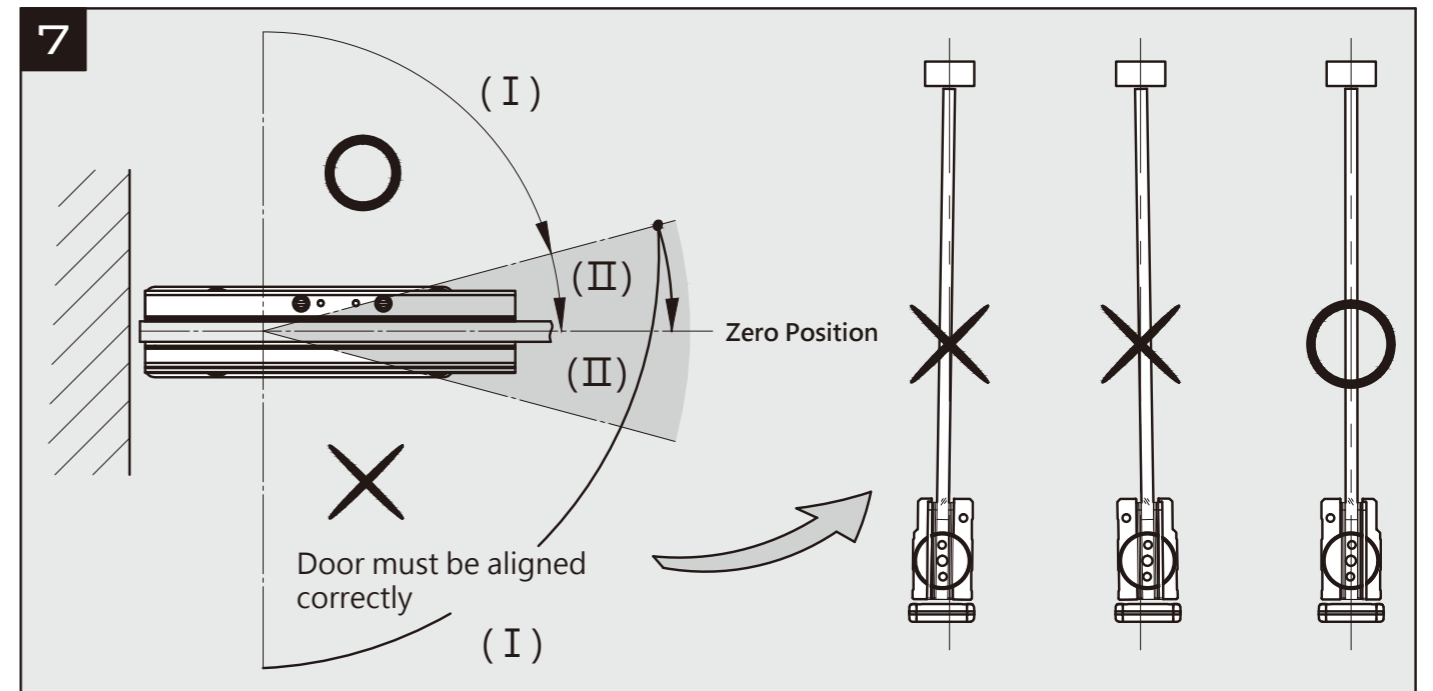
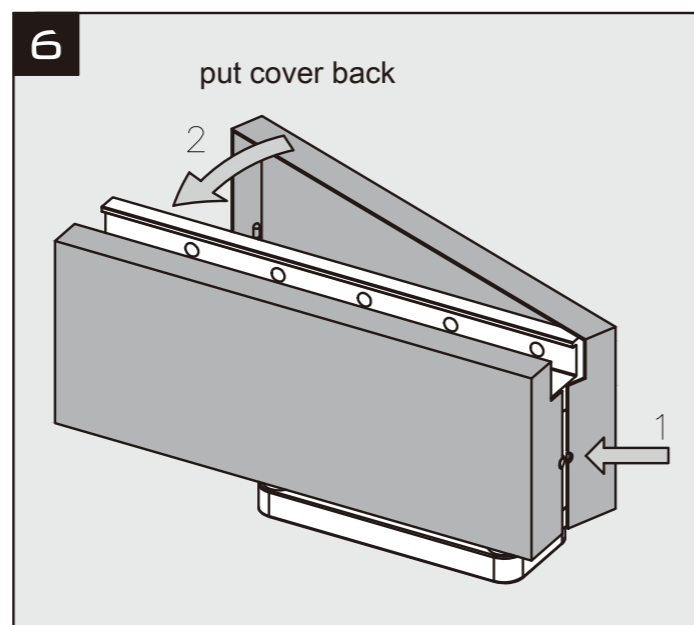
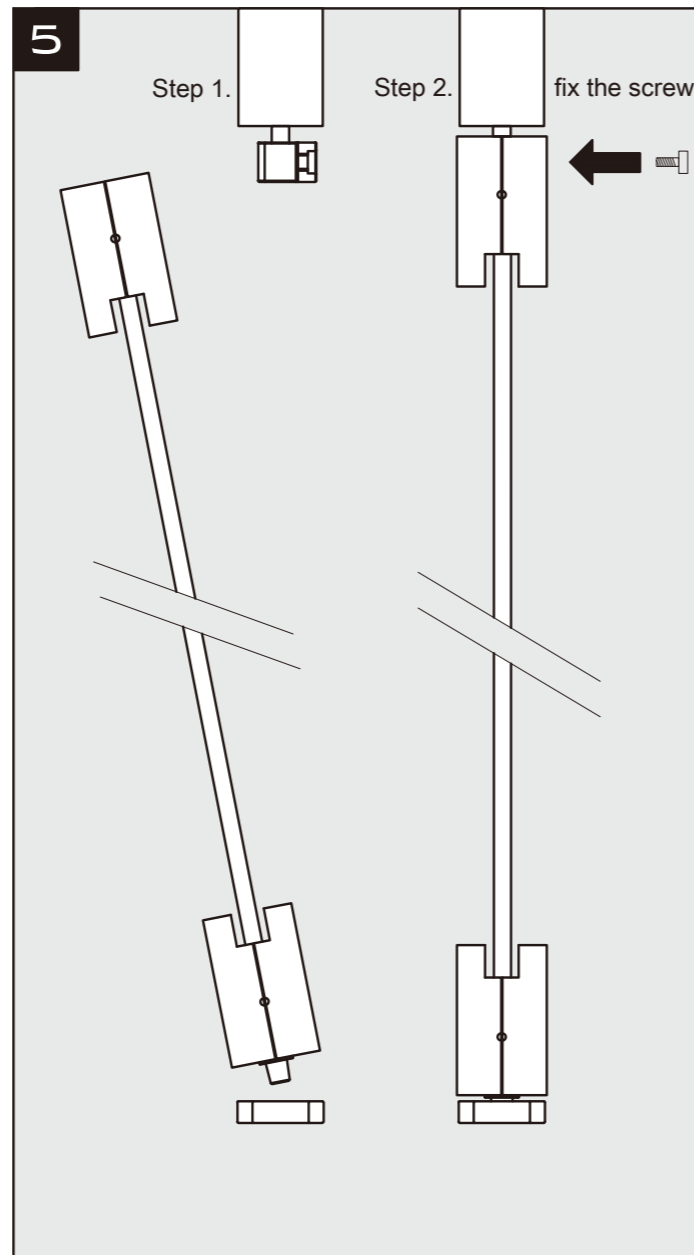
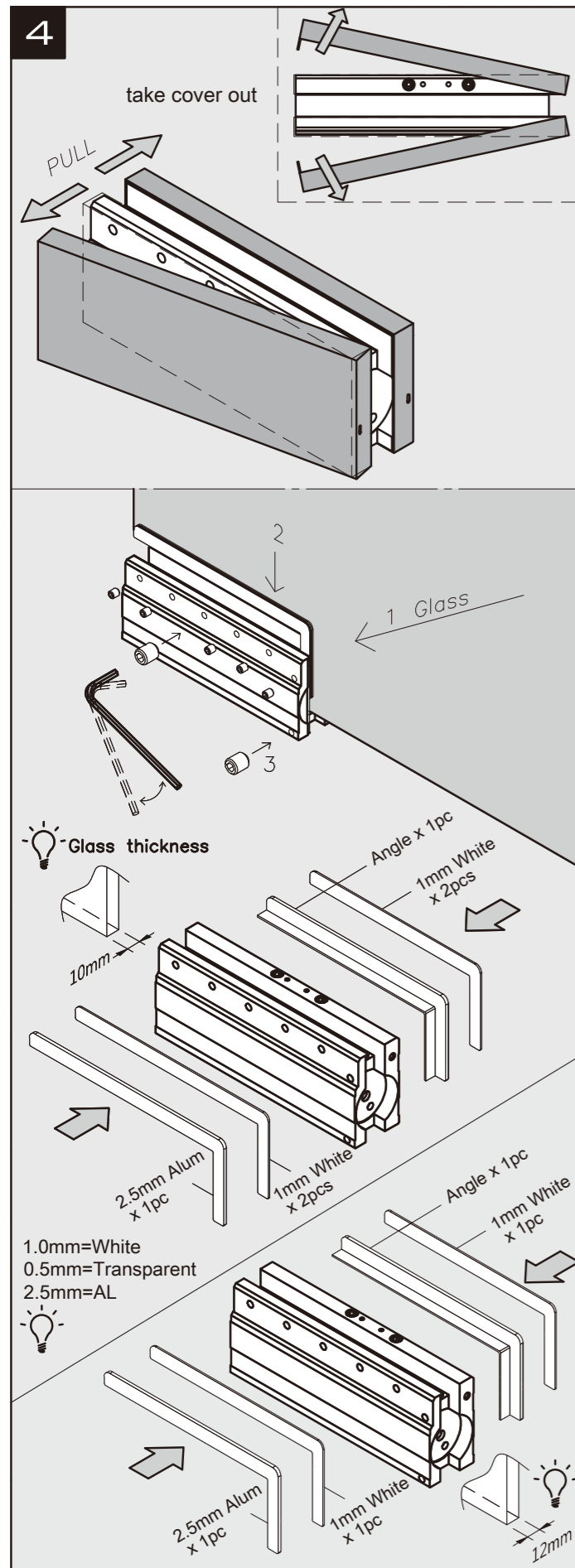


ADJUSTMENT

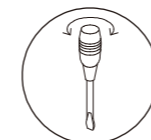


GLASS PREPARATION



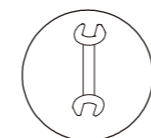


IMPORTANT INSTALLATION NOTES :



AFTER INSTALLATION, PLEASE CHECK AND TEST:

1. Open the door leaf to its maximum opening angle and release. The door leaf should close fully back to 0 degree and should have sufficient power to latch the door closed if the door come with a door lock.
2. Open the door leaf and rest the latch bolt on the striker plate. Release the door leaf. The door closer should have sufficient power to latch the door leaf closed.



MAINTENANCE:

1. Check the door closer every three months to ensure all fixings are secure and adjust if necessary. Adjust the closing and latching speed to make sure the door operates functionally and smoothly.